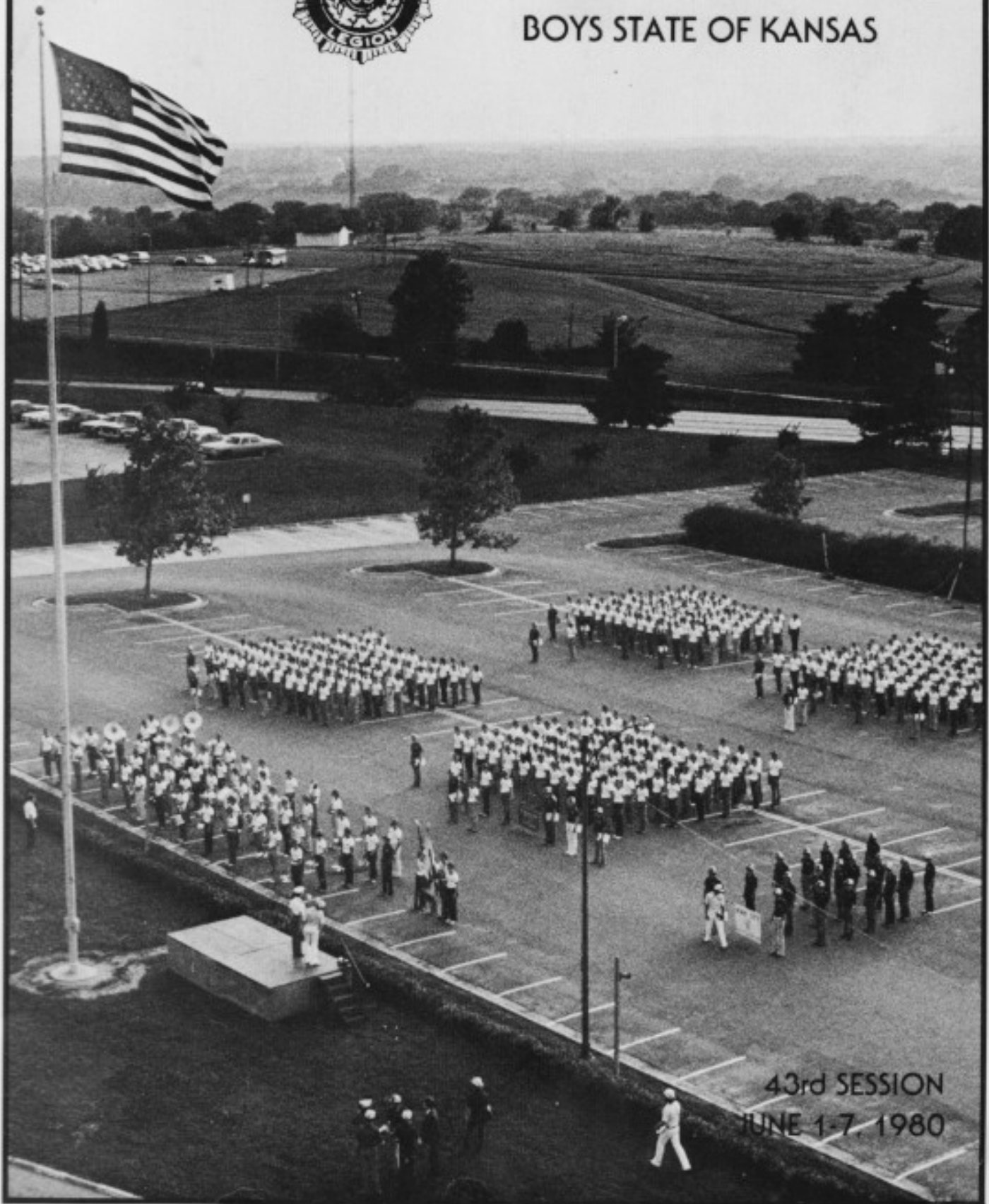




# THE AMERICAN LEGION

## BOYS STATE OF KANSAS



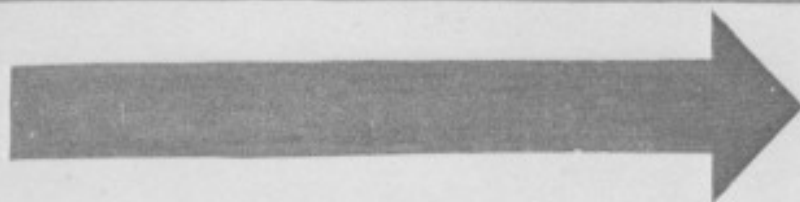
43rd SESSION  
JUNE 1-7, 1980

---

---



# BOYS' STATE OF KANSAS



## Contents

The week in progress .....	1-7
City pictures .....	8-25
Highway Patrol .....	26
Advisors .....	26
Counselors .....	27-28

---



Al Madrid 1979 Governor



Russ Whorley, Executive Director



Joe Nobo, Guest Speaker





John Carr, State Commander



Brad Clark, 1979 Boy's Nation



Jack Brier, Kansas Sec. of State





John Carlin, Governor of Kansas



1980 Elected Officials



Ron Wineinger, 1980 Governor



Robert Stephan, Kansas  
Attorney General



Boys State Supreme Court



Boys State Band



Boys State Chorus







Awards





**CITY OF ICENOGLER:** Counselor: Timothy East, D. Ahlstedt, B. Berner, T. Bieber, E. Bittner, D. Cooper, T. Gray, S. Dawson, A. Dodson, M. Dutton, G. Fitzpatrick, L. Forellch, K. Hallgarth, M. Johnston, D. Messer, J. Nevin, F. Polzin, M. Robinson, D. Roy, C. Skoog, G. Sobba, T. Sterner, A. Tejada, E. Weyer, J. White.



**CITY OF JOHNSON:** Counselor: Paul Davison, C. Adcock, S. Allen, M. Bannister, D. Braden, W. Burton, R. Carey, D. Deines, D. Dodge, A. Ferguson, S. Gilbert, S. Harter, R. Hultquist, B. Middleswart, K. Monroe, C. Morgison, M. Nuckols, K. Paddock, K. Perourek, B. Shandy, T. Simons, G. Slaughter, S. Wolcott.



**CITY OF COSS:** Counselor: Roger Doue, L. Adams, M. Bastian, P. Bertelson, J. Cook, W. Dewell, C. Dunn, G. Ferrin, T. Fischer, C. Goodman, W. Griffith, B. Herndon, D. Huang, P. Jackson, C. Lowry, M. McKernan, L. Mergy, D. Miller, R. Peralez, M. Prevt, R. Schiff, K. Selman, P. Swenson, R. Wineinger, Governor.



**CITY OF HARGREAVES:** Counselor: Brooke Haynes, A. Arnold, R. Bodine, A. Briggs, M. Cisneros, W. Connolly, S. Cooper, S. Ellis, S. Feldhausen, J. Gilliam, C. Hay, A. Hildebrand, G. Hockett, M. McDaniel, P. Morford, M. Reif, D. Rellihan, G. Salts, E. Singer, P. Thomas, T. Turner, M. Workman.



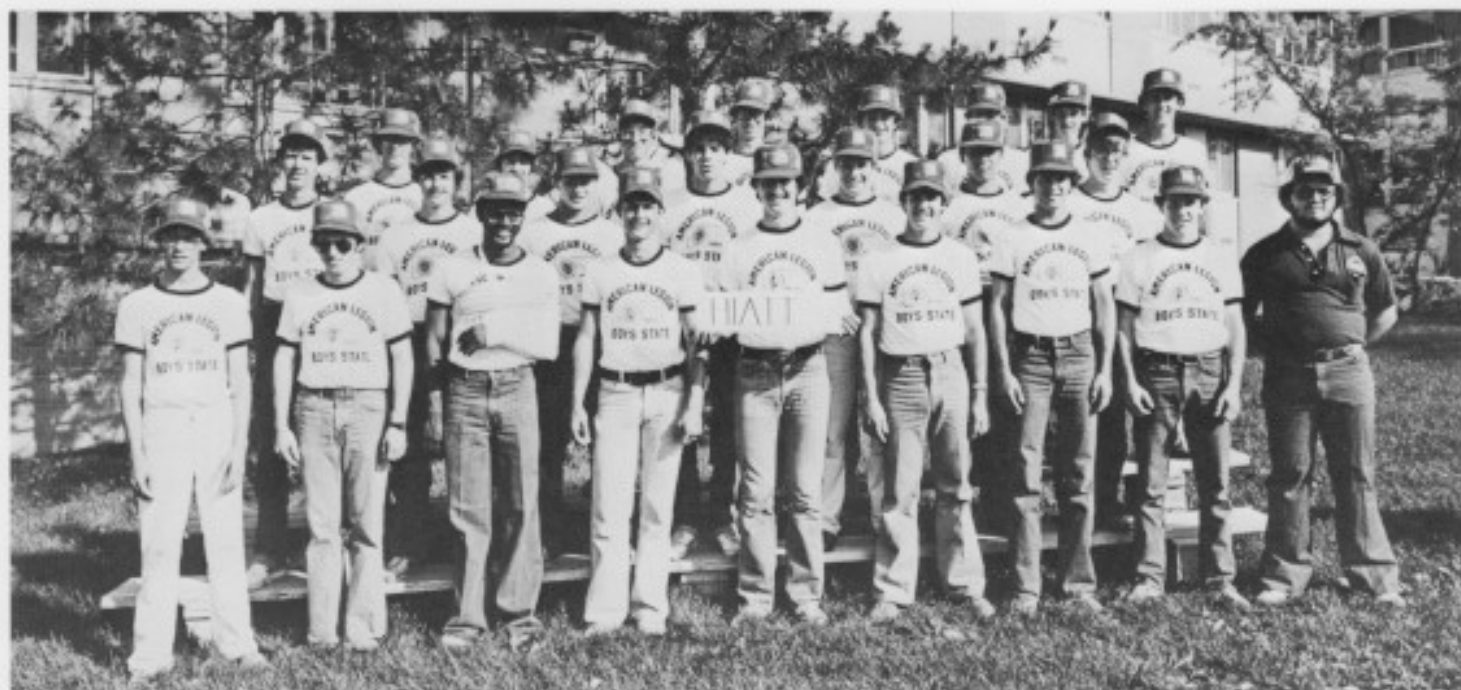
**CITY OF HASLER:** Counselor: Terry Jacobsen, M. Bell, C. Clay, G. Cox, K. Cypert, G. Deskins, P. Eastes, B. Ennis, D. Gumpenberger, C. Hawson, S. Howe, J. Jorns, T. Kirtley, H. Lewis, E. M. McFarland, C. Murray, C. New, T. North, Q. Nufer, S. Onken, G. Plank, J. Scheck, S. Snyder, M. Wills.



**CITY OF LAWRENCE:** Counselor: Brad Peterson, M. Ballinger, D. Byers, R. Carr, D. Enick, J. Gilbert, B. Hanna, T. Henderson, D. Jones, J. Keating, W. Kottas, T. Liebeno, M. Lutz, R. Pluenneke, B. Sommers, R. Stringer, B. Swanson, V. Williams, D. Willis, J. Wolfe.



**CITY OF SCHULZ:** Counselor: David Hyle, L. Bastin, M. Bogina, J. Bong, R. Brown, M. Cooper, J. Corn, R. Dykmann, B. Eveland, D. Farnham, R. Greenwood, M. Harndierks, B. Hayes, T. Hickert, B. Jones, T. Kuntz, G. McBride, K. Nelson, M. Olsen, R. Perkins, S. Searle, M. Syring, B. Wilson, K. Wolfe, J. Young.



**CITY OF HIATT:** Counselor: Eric Branson, C. Bruggeman, S. Burkholder, W. Burns, D. Cummings, G. Duetsch, D. Dunkleberg, K. Elliott, A. Ensminger, B. Friensendahl, G. Giebler, J. Grosdidier, D. Hubbard, T. Karlin, R. Miller, S. Nonken, J. Pickman, R. Richardson, D. Scheve, D. Schielling, M. Ward, L. Weyer, B. Winkler, J. Zimmerman.



**CITY OF FINLEY:** Counselor: Charles Lawhorn, C. Anderson, B. Birney, T. Brewer, D. Castleberry, S. Childers, G. Duffin, B. Ensminger, M. Fields, M. Hall, G. Hutton, T. Leonard, R. McDougle, J. McIlvaine, R. Mulheran, G. Nice, P. Owens, J. Paneitz, D. Pierson, M. Purslow, T. Rokey, L. Searl, R. Smith, S. Woods.



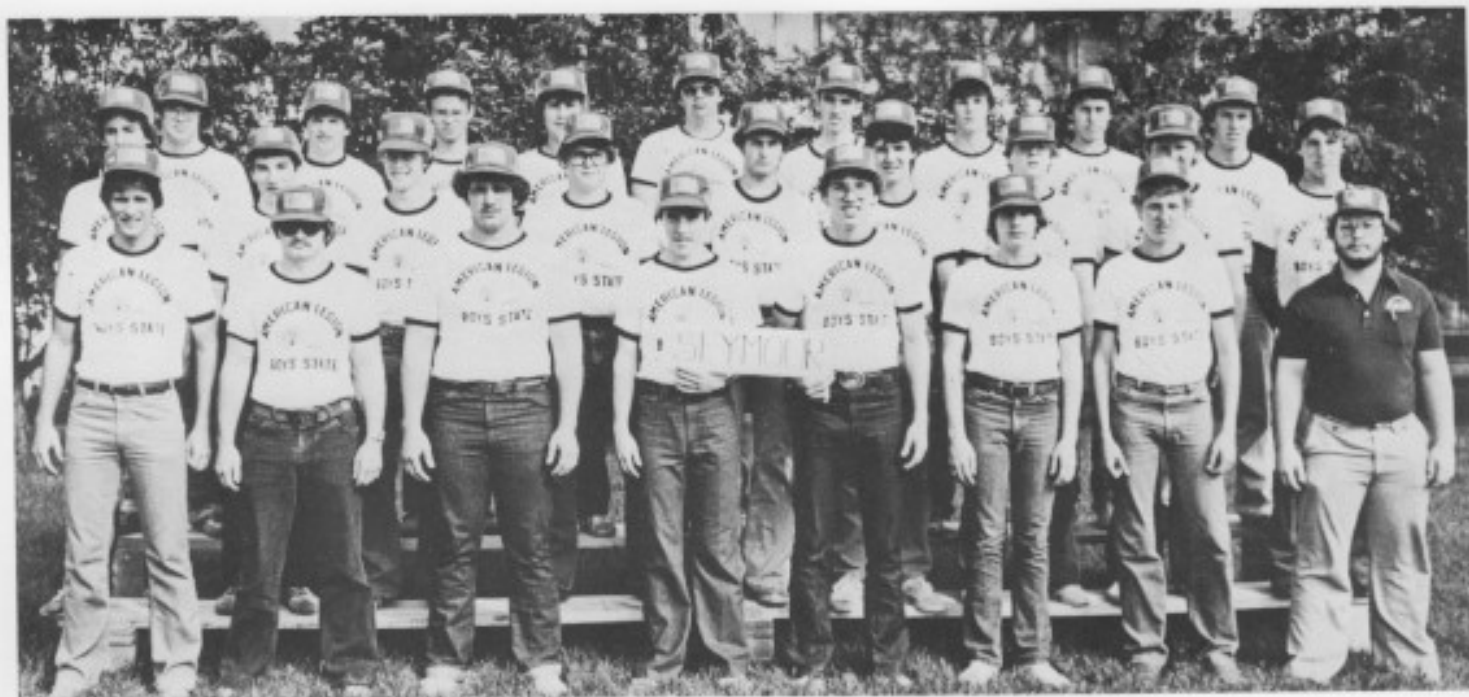
**CITY OF HAUCKE:** Counselor: Jay Shadwick, A. Andra, J. Blaes, K. Boone, S. Byrd, B. Cambers, J. Clement, K. Colvin, T. Fiscus, K. Groth, H. Hall, J. Harbert, J. Jackson, J. Jones, R. Lumbert, R. Martin, A. Mergenmeier, R. Murdock, P. Peterson, P. Schwartz, T. Shoemaker, G. Suppes, J. Tice, B. Tracy, T. Wright.



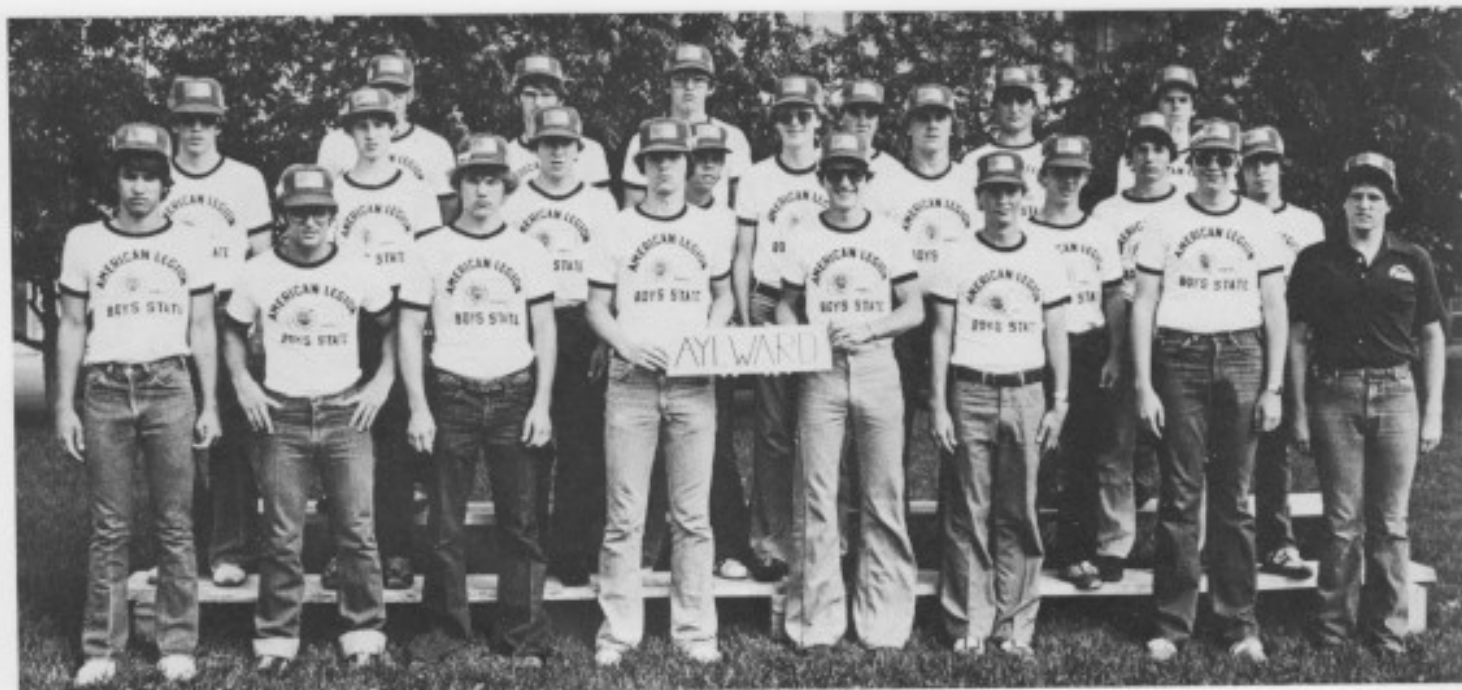
**CITY OF COLMERY:** Counselor: Kevin Wilson, R. Aman, T. Burkart, C. Cain, D. Demel, D. Earle, E. Erickson, J. Finley, V. Flemming, L. Greenwood, D. Herren, J. Hollmon, P. Kyler, J. Lind, K. Maldonado, B. Moody, G. Osborne, D. Roberson, J. Roebuck, T. Schemm, T. Shelby, P. Shields, B. Todd, C. Vincent, M. Ward, B. Wiley.



**CITY OF WILES:** Counselor: Tannie Olsen, P. Ahlenius, J. Blevins, T. Brownback, K. Clark, M. Curtis, M. Dennett, A. Essman, E. Fenley, L. Gourley, J. Grimwood, T. Hand, O. Hardesty, B. Jones, J. Knops, C. Lynch, G. Mayfield, J. Merrell, J. Murphy, G. Opland, S. Paterson, B. Phillips, P. Russell, R. Schneider, J. Zorn.

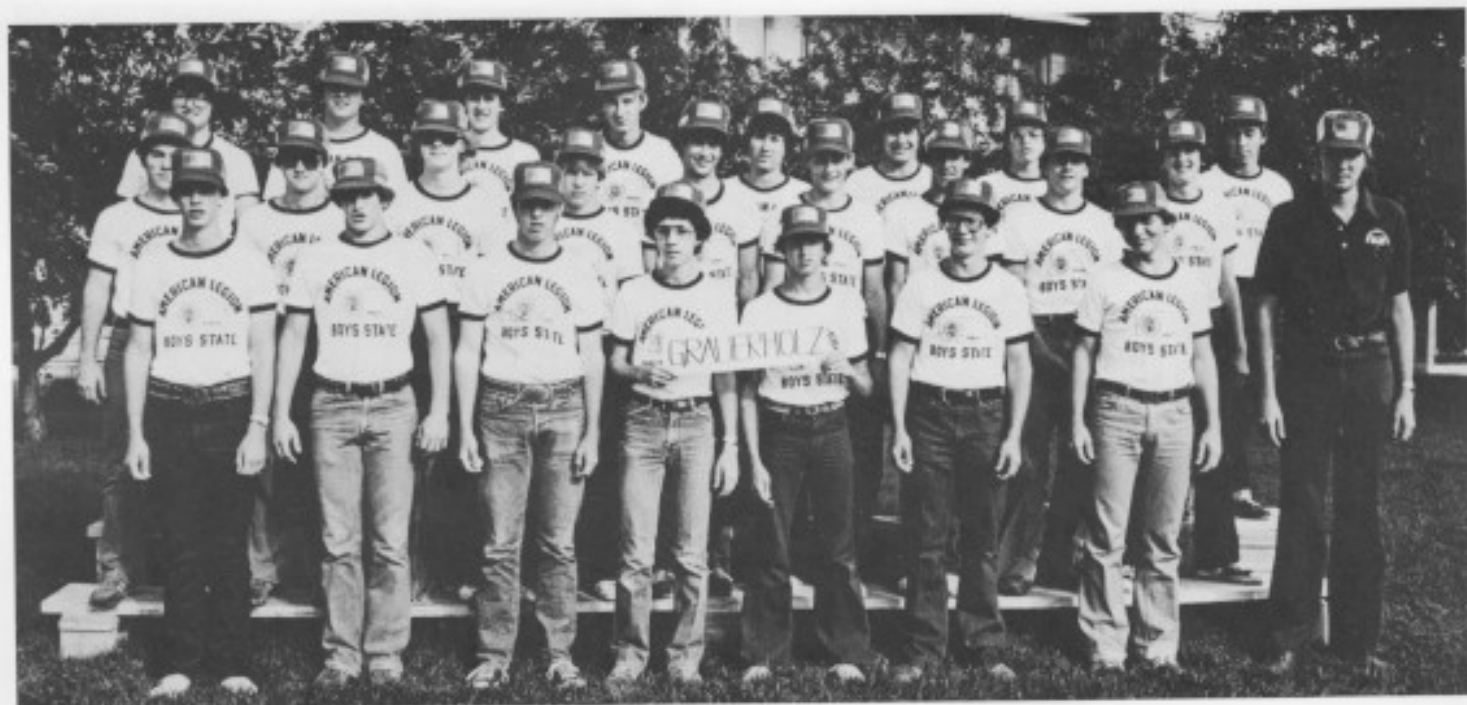


**CITY OF SEYMOUR:** Counselor: Craig McAndrew, K. Attleson, D. Barron, W. Birtle, L. Boyd, W. Burg, S. Coppenbarger, G. Damman, L. Forovich, M. Gurwell, D. Haun, R. Herron, M. Huitt, J. James, D. Johnson, R. Maner, C. Montreuffel, J. Mitchell, R. Muller, M. Nelson, S. Oathout, J. Preston, K. Rush, T. Sesler, W. Stewart, M. Truelove.

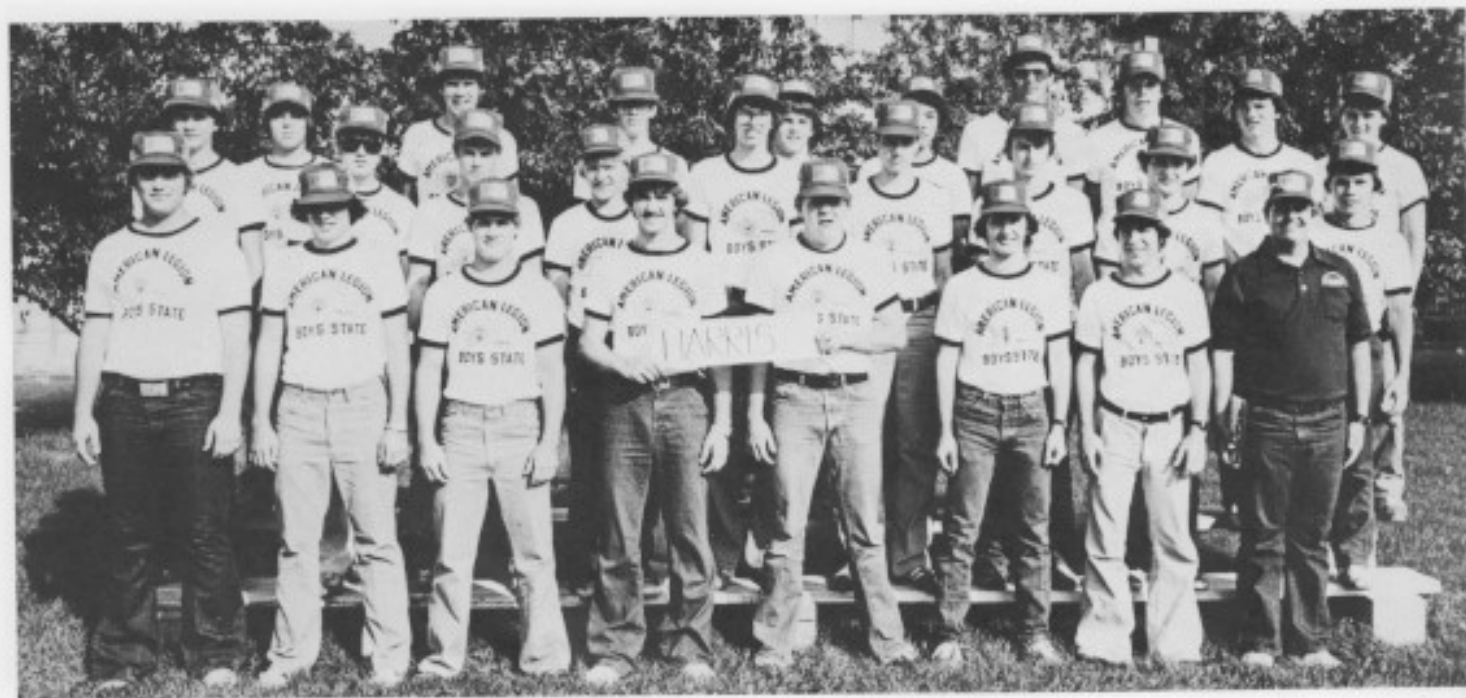


**CITY OF AYLWARD:** Counselor: Max Martin, D. Abel, S. Boyajian, B. Clites, M. Coulter, T. Donnell, C. Ensminger, G. Fraser, K. Glock, A. Heilmann, K. Hickey, P. Jorns, D. Meigs, M. Potts, D. Robb, W. Ruckle, B. Russell, B. Schultz, K. Soukup, E. Tomanek, S. VanDeVeer, T. Wells, J. Whitehair.





**CITY OF GRAUERHOLZ:** Counselor: Scott Johnson, R. Baldwin, D. Buckmaster, D. Burdette, B. Courtrigh, E. Evans, J. DeBauge, L. DeWint, D. Fayette, R. Goodwin, K. Hick, J. Hinman, T. Hotsenpiller, M. Kueser, J. Linot, J. Loomis, W. Marquand, T. Morris, M. Rader, K. Reed, J. Skidmore, B. Strauffer, M. Welsh, M. Wernel, J. Wright, D. Zey.



**CITY OF HARRIS:** Counselor: Mark Williams, B. Auppele, M. Bomgardner, S. Burns, M. Coffey, P. Davis, L. Day, D. Diveley, R. Ehresman, T. Gilbert, W. Horton, G. Houk, J. Jensby, G. Koehler, D. Kuyper, M. Lee, T. Luke, C. Morris, D. Orndorff, M. Pierce, D. Reed, M. Rutherford, B. Saichompoo, D. Schmitt, B. Symes, D. Weatherby, D. Williams.



**CITY OF LANE:** Counselor: Dan Grelinger, T. Amershek, G. Anderson, G. Beisly, Al Burdick, B. Campbell, M. Dunber, J. Hall, T. Karst, S. McGee, C. Mangine, G. Martin, P. Mockley, S. Nick, T. Petty, B. Powers, C. Rankin, D. Reber, G. Riley, S. Saia, S. Sherwood, J. Skolour, S. Sodergren, R. Westfall.



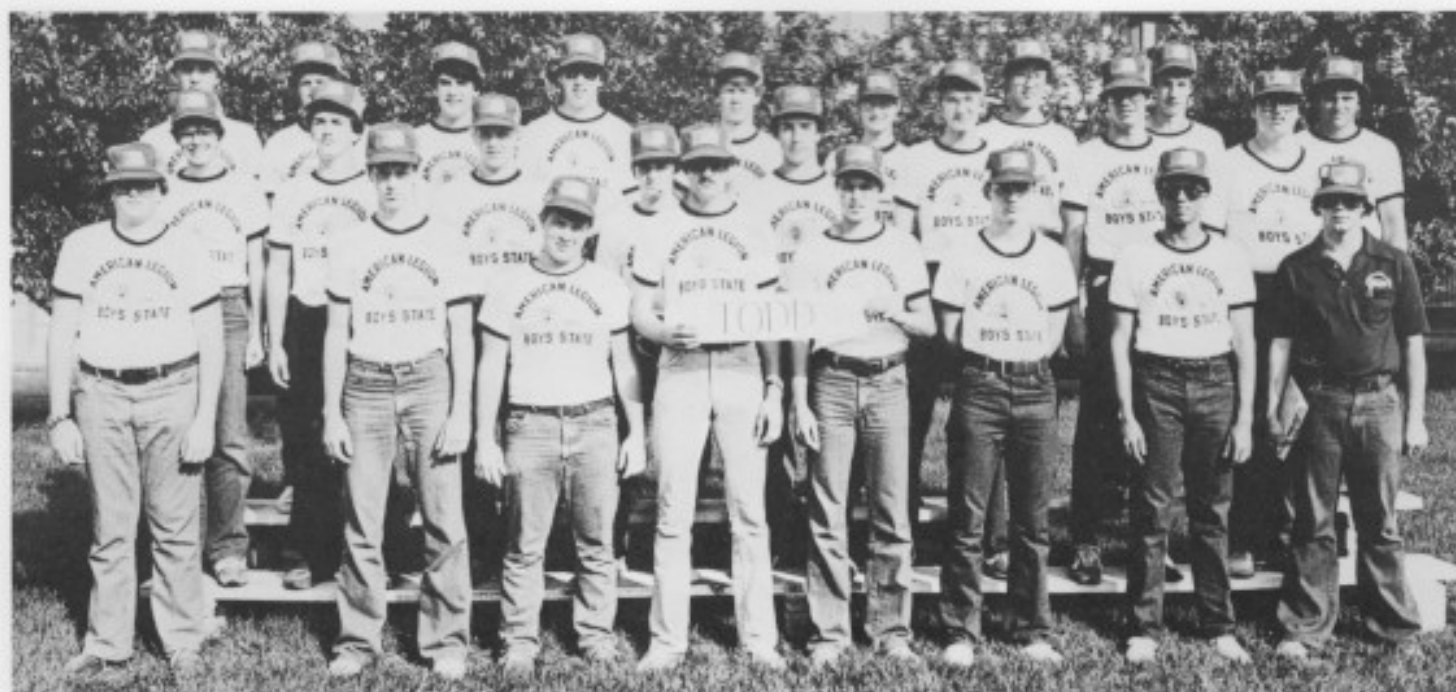
**CITY OF BIRK:** Counselor: John Keating, S. Anglemeyer, D. Bauer, R. Bellah, T. Cummins, L. Davis, D. Delaney, J. Dillon, G. Dunagan, R. Garvert, K. Hannigan, B. Harrelson, B. Horner, T. Jordan, L. Kellenbarger, R. Muxlow, B. Nading, R. Nielsen, C. Ramsey, J. Reeves, K. Schneeweis, J. Smith, D. Stackley, J. Unger, K. William.



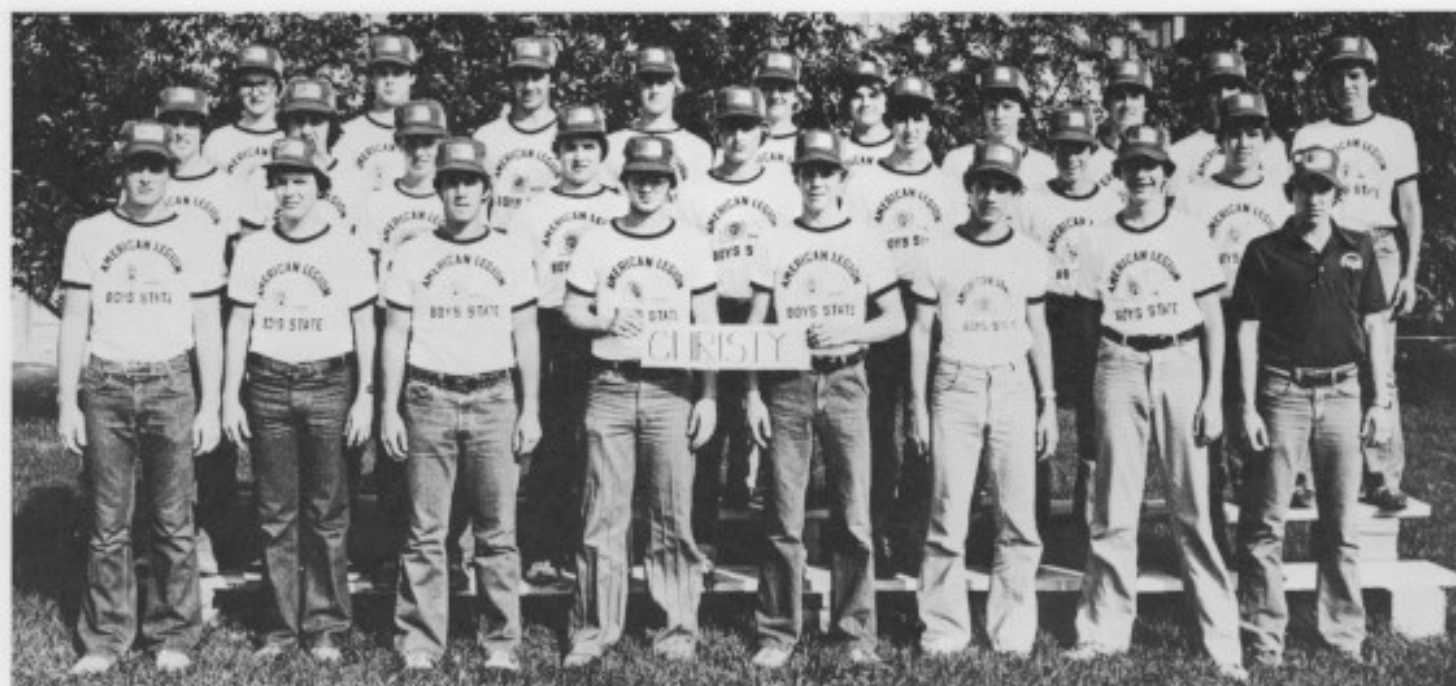
**CITY OF JARDON:** Counselor: Dirk Leas, R. Berye, K. Borger, G. Boyle, D. Brady, T. Calhoun, E. Devin, D. Dick, D. Donley, G. Frame, D. Graves, D. Hussong, M. Jones, P. Kirmer, B. Long, A. Mann, H. Newton, L. Quick, R. Reinsch, M. Severance, M. Stanchfield, D. Staudre, G. White, P. Williamson.



**CITY OF SCHMITT:** Counselor: Craig Rumpel, K. Blasi, D. Bohannon, D. Brennan, G. Fowler, V. Hackerott, G. Huck, M. Kaufman, D. Kinney, J. Long, J. Meade, D. Merrit, D. Moon, P. Peters, D. Roome, P. Scharz, D. Strecker, R. Ward, A. Wells, H. Wilcox.



**CITY OF TODD:** Counselor: Doyle Slack, A. Ben, D. Bryce, S. Buckbee, J. Bynum, K. Froetschner, S. Henne, J. Herod, T. Hunt, S. Jackson, T. Lumpkin, B. McBee, C. Marshall, Q. Marson, C. Moyer, A. Pendleton, K. Ratlief, M. Rogers, J. Schmidt, S. Siebuhr, W. Stephenson, J. Stratts, D. Taylor, R. Trospen, A. Tsen, R. Wagner, D. White.



**CITY OF CHRISTY:** Counselor: Phillip Mathews, T. Barker, D. Beuerlein, J. Brown, L. Cordell, R. Duensing, B. Ebanks, J. Estep, M. Faddis, E. Godderz, M. Grannel, M. Henrickson, K. Horsch, K. Lewman, P. Mancusco, R. Mariani, J. Newhouse, J. Pochta, S. Reed, D. Ryan, D. Scherer, H. Studer, S. Weir, M. Widrig, R. Woodrow, T. Young.



**CITY OF GLIDDEN:** Counselor: Sam Samuelson, K. Alstarr, J. Bowman, P. Brady, R. Carswell, R. Christensen, C. Cindrich, P. Coward, E. Davis, M. Galyardt, R. Gundy, G. Harton, W. Jaeger, B. Kaegi, C. Lowry, M. McGee, R. Moore, G. O'Brien, C. Peaster, G. Preston, S. Schmidt, J. Sturman, R. Vertin, S. Wilson.



**CITY OF SULLIVAN:** Counselor: Marc Cooley, D. Bidwell, D. Branham, T. Brennan, B. Carter, M. Chesser, B. Crismas, S. Hubble, R. Huston, T. Forge, D. Krug, P. Loney, B. McElroy, S. McNary, D. Moor, D. Pastroak, P. Rosewicz, D. Shumaker, E. Smith, D. Somers, S. Stoecker, T. Thomas, G. Vaughn, M. Wegner, J. Wilks.



**CITY OF MC COY:** Counselor: Ross Rogers, J. Bailey, R. Beeman, G. Dice, E. Collier, M. Crane, M. Dibben, D. Eighmey, G. Geldkamp, D. Folsom, G. Hanna, M. Jackman, T. Keating, D. Kos, D. Lowe, T. McDaniel, C. McInteer, P. Miller, W. Parks, K. Payne, G. Potter, S. Shrimplin, R. Smith, W. Trujillo, S. Wade, T. Woodbridge.



**CITY OF CHURCH:** Counselor: Mark Hegarty, K. Arnold, S. Burkett, P. Cowles, M. Daniel, L. Elsen, M. Flanagan, N. Gabrielson, A. Graham, D. Heinrich, J. Jackson, M. Jilka, C. Kinderknecht, M. LaTurner, S. Murphy, M. Piper, R. Quint, D. Schaefer, D. Shea, R. Sitek, K. Smith, J. Thorne, D. Wallace, D. Meier, K. Wilborn.



**CITY OF SEBELIUS:** Counselor: Scott Lidkreig, S. Allen, W. Annan, P. Broadman, A. Bryant, A. Bynum, S. Casady, K. Davidson, J. Freund, C. Greenlief, R. Hall, M. Keehn, J. Keesling, W. Kossow, S. Langley, J. Mason, R. Muman, B. Parker, T. Pholenz, E. Rennie, B. Rome, M. Schlotterbeck, M. Stuber, B. Turley, G. Weaver, J. Zerbe.



**CITY OF NEWMAN:** Counselor: Roy Vestal, M. Beckman, B. Boyer, B. Burton, J. Cahill, J. Gaignat, J. Gordon, M. Gourlay, J. Hinton, R. Hrabe, D. Kellerman, T. Laffin, J. Mitchell, R. Olson, D. Peirano, D. Reith, J. Rohleder, J. Sadler, S. Smith, R. Spuehler, C. Steffen, D. Swafford, B. Tusher, K. VanCamp, D. Watson, N. Williams.



**CITY OF BRAMLAGE:** Counselor: John Bailly, G. Anderson, B. Baresch, M. Bohm, D. Burdette, C. Dick, W. Downey, S. Glahn, M. Gregoire, J. Hill, S. Jimenez, R. Knoefel, J. Kohler, D. Laverenz, D. McAlister, W. Mauch, J. Metzger, G. Nieman, C. Pressnell, A. Richardson, F. Severance, S. Smith, T. Smith, B. Vannocker.



**CITY OF MANTEY:** Counselor: Joe Wilcox, D. Bishir, D. Bowser, R. Clarke, S. Drake, A. Francko, J. Glenn, K. Grantham, K. Henson, S. Hurchison, G. Johnson, D. Lamp, M. Light, B. Medley, S. Nixon, C. Ochsner, J. Peuker, L. Puderbaugh, T. Rose, T. Schod, R. Simmons, P. Speckin, P. Taylor, S. Utech, M. Vorh.





**CITY OF CRUM:** Counselor: David Reinfelds, G. Anschutz, G. Beck, D. Bond, B. Bowersox, R. Broeckelman, W. Cole, P. Connelly, M. Crystal, S. Dahlberg, J. Erickson, K. Frerichs, C. Gerkin, W. Hoge, H. Hanna, A. Kim, V. Larson, M. Lawrence, D. Leavitt, K. Morey, M. Morgan, D. Salava, S. Schultz, T. Tucker, K. Venters.



**CITY OF JANSSEN:** Counselor: Scot Faris, J. Batts, M. Bryant, D. Christians, D. Howell, R. Joyce, A. Kindsvater, C. Laderer, D. Loch, S. Marshall, J. Myers, T. Nelson, T. Osborn, K. Parks, M. Patel, R. Plummer, T. Polson, J. Reed, L. Roesner, G. Sandercox, J. Sepulveda, S. Smith, K. Stiff, D. Taphorn, M. Thompson, R. Willard.



**CITY OF PERRILL:** Counselor: David Smith, J. Barenklau, D. Bauerle, J. Edemann, M. Gregory, K. Haverkamp, D. Hearh, B. Labes, G. Lueger, B. McNulty, M. Montoya, S. Richardson, M. Rutledge, J. Sandy, B. Schwarz, D. Seagle, P. Sullivan, D. Thayer, T. Tilford, D. Vantuyl, C. Woolverton, L. Willis, R. Wulf.



**CITY OF KYLE:** Counselor: Sandeep Mukerjee, D. Bodemann, B. Burris, T. Burton, D. Downes, L. Elder, C. Hogen, G. Hickert, D. Lamb, P. Leiningner, P. Master, D. Mead, T. Metcalf, J. Paul, R. Remsberg, M. Rowley, F. Sanders, J. Schlichting, S. Steinlage, T. Taylor, J. Wheat, C. Whipple, B. Winzenried, K. Yowell.



**HIGHWAY PATROL:** S. Buckbee, T. Woodbridge, L. Puderbaugh, B. Ensminger, K. Grath, J. Clement, B. Hays, G. Deskins, B. Hanna, R. Vertin, D. Enick, E. Evans, C. Goodwin, J. Murphy, G. Opland, P. Russell, J. Mitchell, R. Smith, P. Owens, S. Byrd, D. Heath, D. Lamb, E. Collier, S. Smith, B. Tusher, T. Rose, J. Poulker, M. Miller, R. Peratez, D. Shurnaker, S. McNary, S. Glahn, M. Schlotterbeck, M. Beckman, P. Cowles, C. Ochsner, L. Boyd, P. Connaly, M. Coulter, Advisor: Roy Kirkendall.



**LEGIONNAIRE ADVISORS:** Wayne Alexander, Leroy Armstrong, Charles Arnold, Vernie Baldwin, John Carr, John Cotter, Floyd Dean, Hollis Dunham, Robert Dunlap, Red Elder, Walter Egli, Harold Finkemeir, Patrick Finley, Marshall Gardner, Cecil Goforth, Anthony Hensley, Harold Hollis, Bruce Janssen, Dale Kerr, Gume Lamas, Grant Lane, Fred Leadbetter, Ralph Lickteig, Barney Maxfield, Chic Moran, Herold Parkes, Mike Peck, Tom Propps, Walt Raymond, Paul Saucedo, Vincent Saucedo, Victor Smischny, Dino Spigarelli, Louis Vanderstroy, Jack Warkentine, Carl Wasson, Ron Welch, Pete Werner, Russ Whorley, Harold Witham.



**Coordinators:**  
Jay Shelton, Mike Huber,  
Rick Cobb, John Hambricht



**COUNTY COUNSELORS:** Jim Anderson, Thane Chastain, Roy Curtwright, Allen Klassen, David Sandritter, Steve Sapp, Marty Shump, Thom Sutherland, Gopi Vasudevan.



**COUNTY ADVISORS:** Charles Arnold, Vernie Baldwin, Wayne Alexander, Harold Witham, Pete Werner, Fred Ledbetter, Barney Maxfield, Cecil Goforth, Vincent Saucedo.



**STAFF COUNSELORS:** First row, L-R, J. Rippe, E. Hermann, D. Hardy, P. Haile, C. Nelson, J. Cutney, A. Creighton, F. Burrow, P. Amore, G. Rennels, Jay Shelton-Coordinator. Second row, T. Wierman, J. Thornton, E. Tarum, G. Strohm, K. Seyfert, J. Seebald, D. Schulz, J. Sanford, M. Russell, R. Hinkel. Not shown: M. Brecheisen, T. Dorl, J. Eker, K. Wright.



**GOVERNMENT COUNSELORS:** First row, L-R, Anthony Hensley (Advisor), D. Adkins, A. Madrid, J. Bragalone, R. Dulas, B. Tomlinson, J. Hambright, Bruce Janssen (Advisor). Second row, L-R, D. Welch, F. Barhydt, N. Clenburg, S. Gardner, G. Merklin, K. Lawrence, J. Estlack, R. Greenbaum. Third row, L-R, B. White, B. Thorne, M. Klopfenstein, M. Hardesty, K. Porteous, L. Reynolds, D. Hewes, N. Golightly, P. Retz.



YEARBOOK BY:  
CLAY KAPPELMAN  
Photography  
Lawrence, Kansas



UNIVERSITY OF KANSAS  
LAWRENCE, KANSAS